

INSTRUCTIONS FOR INSTALLING

ATWATER KENT

Panel Type Receiver and Chassis Speaker in Furniture Cabinets

PRELIMINARY

When making installation of the Atwater Kent Panel Type Receiver and Chassis Speaker in a console cabinet it is important that the several steps in the installation be made in proper order, so that a minimum of time and effort will be consumed. The following order of procedure will be found best:

1. Insert tubes in sockets in receiver.
2. Place receiver into cabinet.
3. Mount speaker, and insert speaker-plug in its socket on receiver.
4. Connect antenna and ground wires to proper posts on receiver.

Numbers 1 and 4 are fully covered by the Atwater Kent complete Instruction Book (furnished with receiver.) Directions for placing the receiver in cabinet and mounting the speaker follow:

INSTALLING RECEIVER

After inserting tubes and putting tube shields in place (see Atwater Kent Instruction Book, pages 7 and 8), loosen screw in small wooden block located on center of transverse wooden crosspiece at middle rear of cabinet. Turn this block to a position parallel with crosspiece. Next, grasp receiver firmly, placing one hand on either side of base, with panel facing away from you. DO NOT attempt to lift receiver by grasping the individual units, but take hold of sides of base only. Lift set carefully, place it into upper section of cabinet, so that its four corner "feet" rest on the horizontal shelves on either side of cabinet. Slide set all the way forward and see that panel locates centrally behind the opening for it in face of cabinet. Now turn small rear block to its original position and screw it down tightly. (Note: If set is Model 66, it will be necessary to remove small wooden block when inserting set, and mount it vertically up against rear edge of horizontal crosspiece after set is in position.)

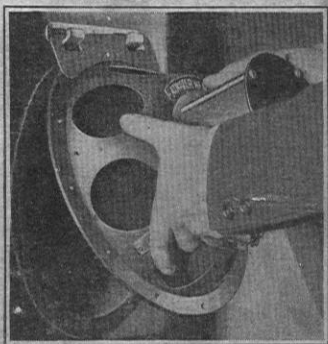


Fig. 1

After speaker has been mounted, insert connecting plug in its socket in receiver as per page 7 of Instruction Book furnished with receiver.

Fig. 2 shows view of rear of a cabinet with both set and speaker properly installed.

NOTE.—IF AT ANY TIME THIS CABINET IS TO BE MOVED TO ANOTHER LOCATION, REMOVE RECEIVER AND SPEAKER-CHASSIS BEFORE DOING SO.

MOUNTING SPEAKER

To mount chassis type speaker, hold it with horizontal flange at top, slip slots in flange over hooks on support bracket (see Fig. 1) and allow speaker to slide down into position. Rim of speaker should then press evenly against the felt strip around opening at all points.

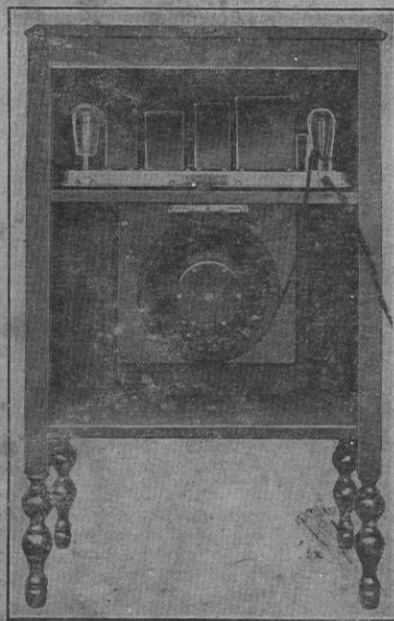


Fig. 2